



Technical Specifications



Contact Information:

Jamie Grant- General Manager

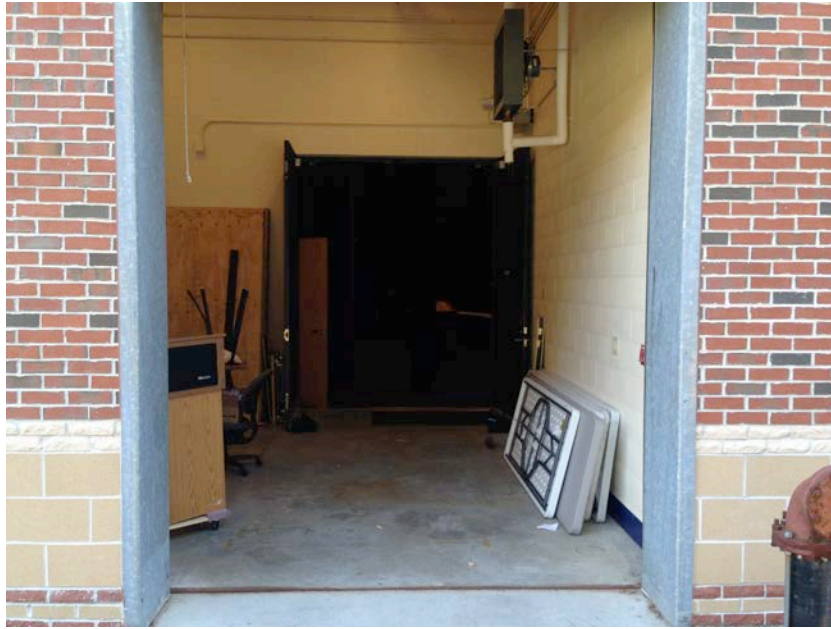
207.857.3860

grantj@westbrookschoools.org

WestbrookPAC.org

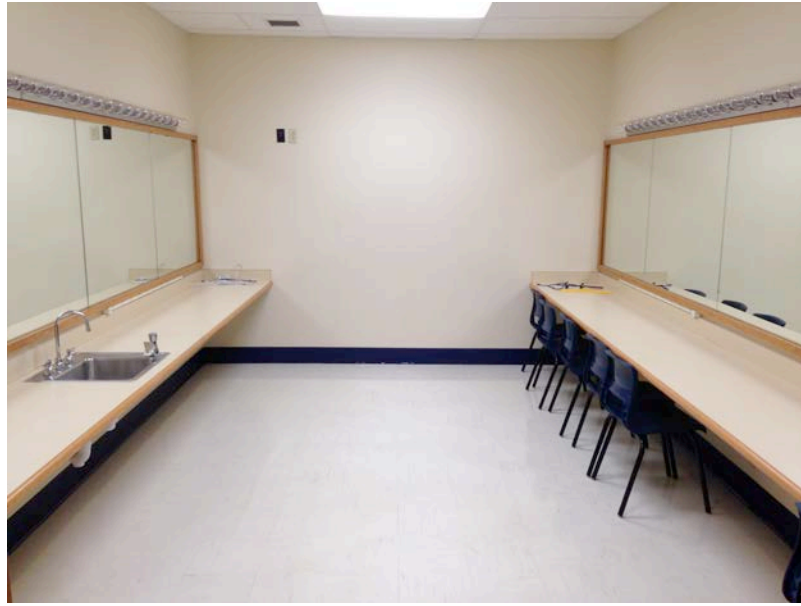
Loading Dock

- Stage-level loading door 8'W X 10'H
- Easy roll off from truck to loading dock to stage



Dressing Rooms

- There are 2 dressing rooms- each 20'x12' that can each accommodate 12-15 performers



Stage Dimensions

- Proscenium width: 40'-0"
- Total width of stage including wings: 69'-0"
- SL wall to Proscenium: 14'-10"
- SR wall to Proscenium: 14'-10"
- Depth from proscenium to back wall: 35'-3"
- Depth of apron: 8'-5"
- Plasterline to House Mix Position: 45'-6"
- Plasterline to Control Booth: 97'-0"
- Projector to Projection Screen- 96'3"
- Proscenium height: 19'-3"
- Grid height: 40'-6"
- Stage floor to house floor- 3'-3 1/2"
- Fly system is a motorized hoist system.

Lineset Schedule

Lineset	Item	Dist. From Plasterline	Trim
1	Valance	0'-9"	18'-0"
2	Projection Screen	1'-3"	
3	Main Curtain (Dead Hung)	2'-2"	
4	Border #1 (Dead Hung)	3'-4"	18'-0"
5	#1 Electric	4'-8"	
6	Legs #1(Dead Hung)	6'-8"	
7	Acoustical Shell	7'-8"	
8	Border #2 (Dead Hung)	8'-8"	18'-0"
9	Spare Batten	9'-9"	
10	#2 Electric	11'-8"	
11	Legs #2 (Dead Hung)	14'-9"	
12	Acoustical Shell	15'-10"	
13	Border #3 (Dead Hung)	17'-9"	18'-0"
14	N/A	18'-8"	
15	#3 Electric	20'-10"	
16	Legs #3 (Dead Hung)	23'-7"	
17	Acoustical Shell	24'-8"	
18	Border #4 (Dead Hung)	25'-9"	18'-0"
19	#4 Electric	27'-9"	
20	Full Stage Black Traveller	29'-8"	
21	Spare Batten	30'-9"	
22	White Cyclorama	32'-8"	

- Linesets are attached to Powerlift Hoists and controlled by Scene Control 500 Control System operable from either SR or SL.
- Spare battens are on variable speed programmable motors and rated for 1200 lbs. per batten.
- Legs are 8'-10"W X 22'-0"H and on pivoting roto-drapers. Borders are 50'-0"W X 6'-0"H and are dead-hung at 18'-0". Both the legs and borders are 15 oz. Encore black with 50% fullness.
- Main Curtain and Valance are dark blue with 50% fullness.
- Main Curtain and Full stage Black traveller and are operable from SR.
- White Cyc is 26'-0"H x 54'-0"W seamless natural muslin.

Orchestra Shell & Equipment

Westbrook Performing Arts Center is equipped with an adjustable orchestra shell. This unit consists of three permanently hung ceilings on motorized hoists. The ceilings hang in a vertical position on line-sets 7, 12, and 17. They can be flown in and tipped horizontally to create a ceiling over the stage. Use of the shell must be arranged during the facility leasing process. In addition, 12 Wenger orchestra walls are available to

provide an acoustical back wall for the space. Additional costs may apply to the use of this equipment

Lighting

Power

Located USR:

1-400 amp, 3-phase 5-wire company switch

House Lights

Control is DSR, DSL, House Mix Position, Control Booth, or through the lighting console.

All House Lights are patched into an ETC Unison system

Lighting Equipment

Dimming

ETC Sensor Rack – 178 dimmers @ 2.4kw.

Dimmer Layout

FOH catwalk- dimmers 1-36

SL Box Boom- dimmers 61-72

SL Rail- dimmers 37-48

SR Box Boom- dimmers 61-72

SR Rail- dimmers 49-60

#1 Elec.- dimmers 73-90

#2 Elec.- dimmers 91-106

#3 Elec.- dimmers 107-122

#4 Elec.- dimmers 123-138

Floor Pockets- dimmers 139-166

Wall Pockets- dimmers 167-178

DMX

Chauvet Opto Splitter located SR.

#1,2,3,& 4 Elec.'s onstage each have DMX

ETC Net A & B located DSR, DSL, and FOH catwalk

Control

ETC Ion w/ RFU

Additional Equipment

A limited inventory of stage cable and lighting accessories to compliment rental and touring equipment as needed. We also maintain a color inventory.

Spotlights

The Westbrook Performing Arts Center does not currently own followspots, but can rent up to 2 followspots and operators for a performance for an additional fee.

Lighting Equipment

5- 14° ETC Source Four @575W

25- 19° ETC Source Four @575W

16- 26° ETC Source Four @575W

37- 36° ETC Source Four @575W

30- ETC Source Four Par w/ complete lens package @575W

5- L&E 3cell BroadCyc @ 1000W/cell

Audio

Audio Equipment/Infrastructure

The Westbrook Performing Arts Center has a small inventory of audio equipment for basic PA requirements. We are capable of supporting most lectures, graduations, award ceremonies, and small concerts.

Output

House Left flown cluster:

Renkus Heinz SGX151- Qty. 2

Renkus Heinz SGX12S – Subwoofer- Qty. 1

Center flown cluster:

Renkus Heinz SGX121 - Center - Qty. 2

House Left flown cluster:

Renkus Heinz SGX151- Qty. 2

Renkus Heinz SGX12S – Subwoofer- Qty. 1

Monitors:

JBL - SRX712M - Qty. 4

Input

These items include:

PLAYBACK EQUIPMENT

JVC - SR-MV55US - DVD/VCR Combo- Qty. 1

MAP -RSH4A - JVC Rack Mount- Qty. 1

JVC - SR-DVM700 - DVD/DV Combo- Qty. 1

Denon - DN-C640 - CD Player- Qty. 1

Raxxess - iRDS-1 iPod Dock- Qty. 1

Microphones

Shure - UR4D – Receiver- Qty. 1

Shure - UR1 - Beltpack Transmitter- Qty. 2

Shure - UR2/SM58 - Handheld Transmitter- Qty. 2

Shure - WL185 - Lavalier Mic- Qty. 2

Shure - MX418/C - Gooseneck Mic- Qty. 1

Shure - 450 - Desktop Mic- Qty. 1

Shure - SM58-LC - Vocal Mic- Qty. 8

Shure - SM57-LC - Instrument Mic- Qty. 4

Shure - SM86 - Condenser Mic- Qty. 2

Shure - MX202W/S - Hanging Mic- Qty. 3

Sennheiser - MKH418S - Stereo Mic- Qty. 1

MIXING, PROCESSING

Yamaha - M7CL-48 - Control Console - 48 Channel, Digital

Yamaha - MBM7CL - Meter Bridge

VIDEO EQUIPMENT

Sony - BRC300 - 3 Chip PTZ Camera- Qty. 4

Vaddio - Quick Connect 4 - Camera Interface

Vaddio - Production View FX - Camera Controller

Panasonic - PT-DW7000U-K – Projector

PROJECTION SCREEN

DaLite - DaMat Screen Surface - Black Back - 16'-0" x 28'-0"

PRODUCTION INTERCOM

ClearCom - MS-704 - Main Station - 4 Ch- Qty. 1

ClearCom - RM-704 - Remote Station - 4 Ch- Qty. 1

ClearCom - RS-602 - Beltpack - 2 Ch- Qty. 8

ClearCom - CC95 - Headset - Single Muff- Qty. 8

ClearCom - KB-701 - Wall Station- Qty. 3